

UPlan Weekly Digest

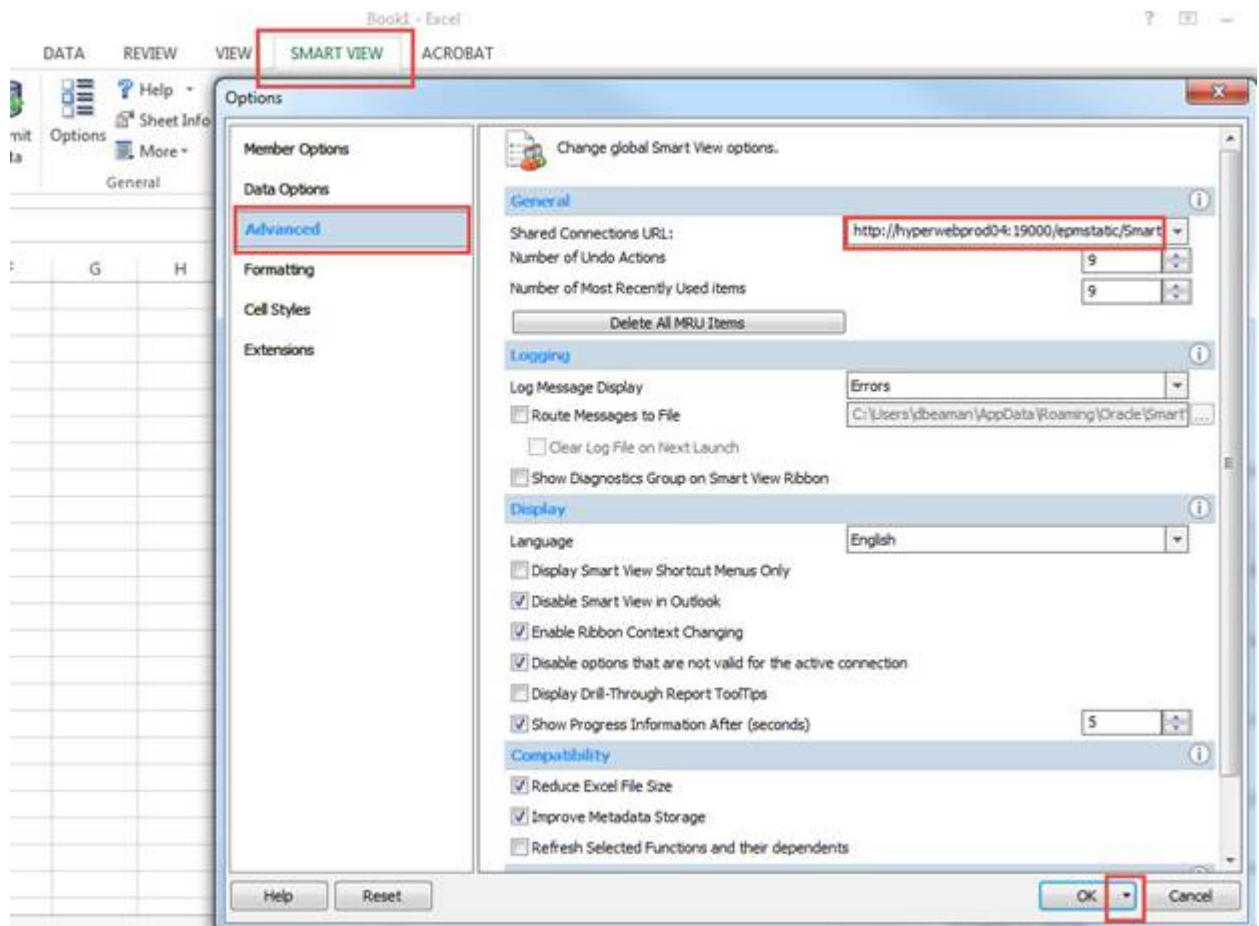
Friday, February 26, 2016

Announcements:

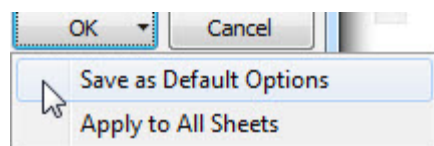
- **NEW Smart View URL:** All Users should update their Smart View URL. **This URL is new as of February 19, 2016.** Updating the URL solves the Smart View FR Report issue as outlined in the Bug Fixes/Enhancements section of the [February 19th Weekly Digest](#).

To update the URL:

Open Excel > click on Smart View ribbon > click on Options > Advanced Tab > insert this URL: http://hyperwebprod04:19000/epmstatic/SmartView_Connections.xml



Click on the triangle on the OK button > Save as Default Options.



Known Issues:

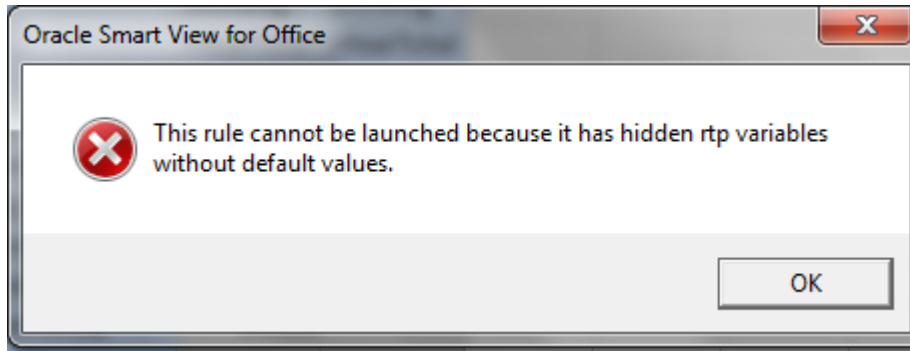
- **Search Individual Empl form in Smart View only:** Due to an Oracle bug, when planners use the Search Individual Empl form in Smart View to submit data, they are prompted to select and enter the Employee ID in order to submit the data successfully. A work-around is to **use the Search Individual Empl form in the web**, which does not require planners to select the employee. This issue will not be resolved until Oracle releases the fix in the next patch.

The screenshot shows a 'Business Rules' dialog box. At the top, there's a 'Plan Type' section with a checked box next to 'Empl'. Below that is a table with three columns: 'Business Rule', 'Plan Type', and 'Type'. The table contains one row: 'Employee Composite', 'Empl', and 'Rule Set'. At the bottom of the dialog, there's a 'Runtime Prompts' section, which is highlighted with a red circle. It contains a prompt 'Please select the Employee' followed by an empty text input field and a search icon. At the very bottom of the dialog are 'Save' and 'Cancel' buttons.

- **Search Individual TBH form in Smart View only:** Similar to the Search Individual Employee form in Smart View issue (please see above), when planners use the Search Individual TBH form in Smart View to submit data, they are prompted to select and enter the TBH in order to submit the data successfully – this is a known Oracle bug. A work-around is to **use the Search Individual TBH form in the web**, which does not require planners to select the TBH. This issue will not be resolved until Oracle releases the fix in the next patch.
- **Navigation to the Employee Composite form or to the Compensation by DFP report:** When planners navigate to the individual employee composite form from another form, they may not be brought directly to the chosen employee. Likewise, when planners navigate to the Compensation by DFP report from the Revenue and Expense form, they may not be directly to the chosen DFP. This issue is under investigation.

Bug Fixes and Enhancements:

- **RESOLVED - Search Individual TBH form in Smart View only:** Planners received the below error message when submitting data using the Search Individual TBH form in Smart View. This issue has been resolved.



Thank you,
The UPlan Team