

Historical STIP Information

This job aid will explain:

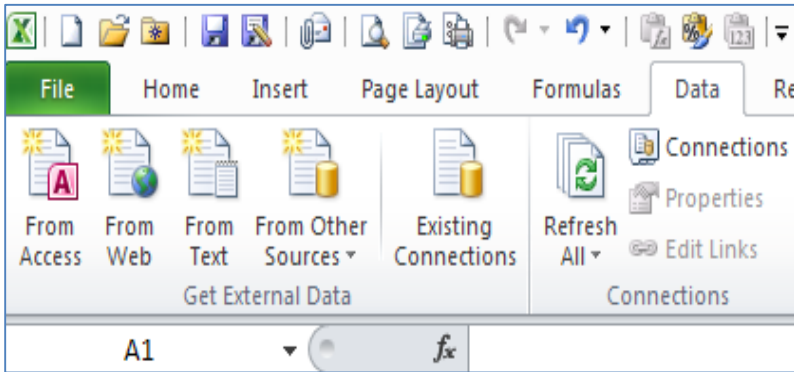
- How to look up the STIP Attribute on DeptID (Find the Target of STIP) for journals since COA Conversion, but prior to November 2014.

Determining the STIP Attribute on DeptID

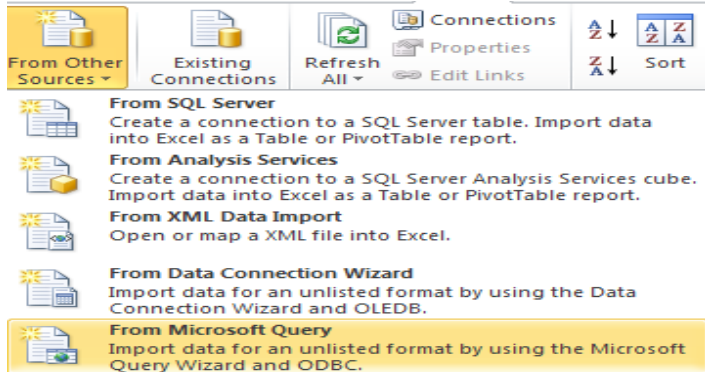
If you need to know the value of the STIP Attribute on DeptID in the past or the effective date when it was changed, you can look up the value in ODS, or refer to the tables of source and target DeptIDs at the end of this job aid.

1) There are several ways to look up the STIP Attribute on DeptID in ODS. The following is one way to accomplish this using Excel and Microsoft Query. These instructions assume you have already set up access to ODS on your workstation.

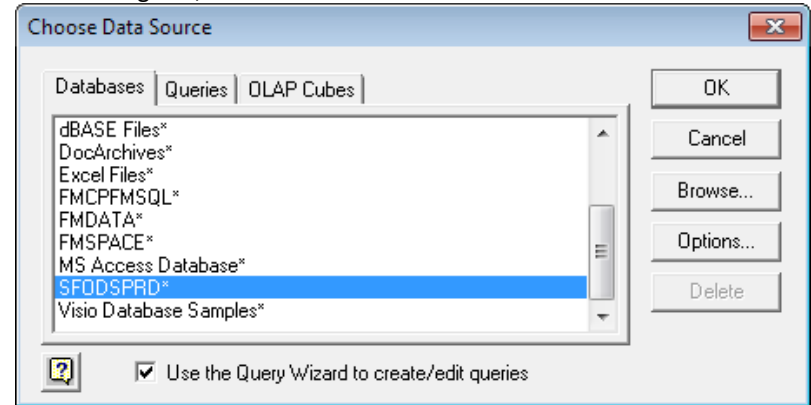
a) In Excel, choose "From Other Sources" on the Data menu in the ribbon.



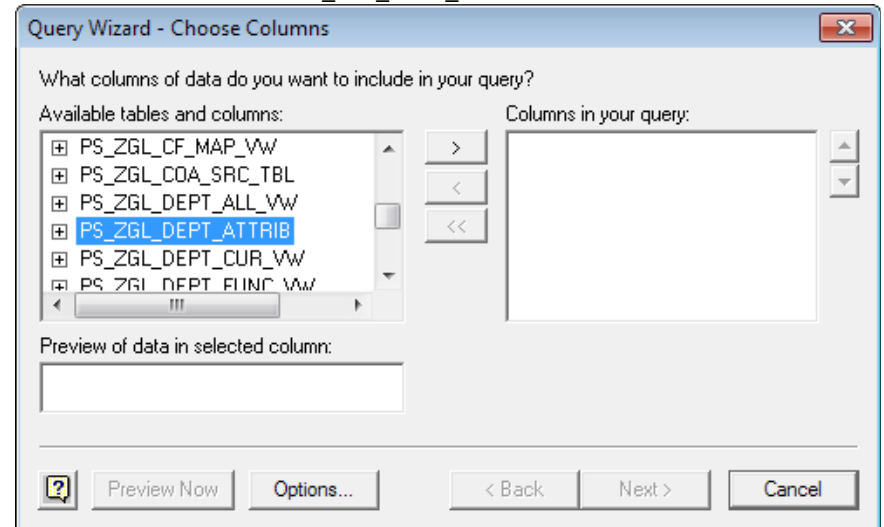
b) From the drop-down menu, choose "From Microsoft Query."



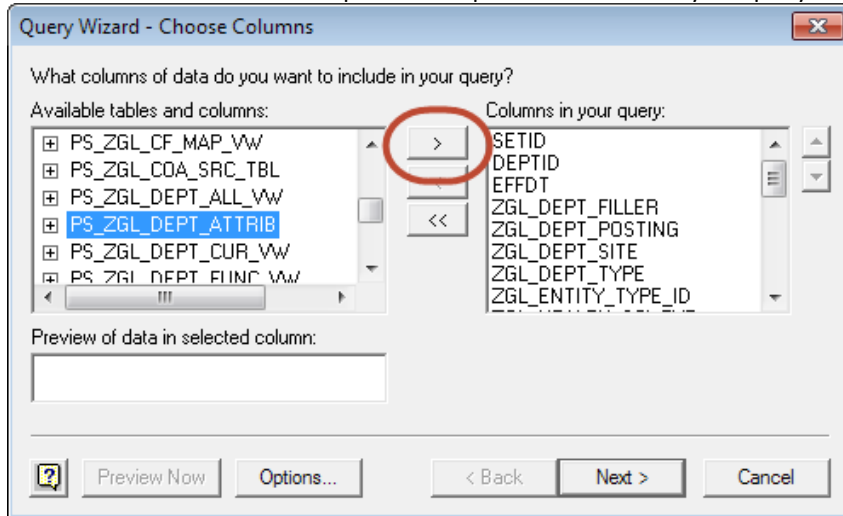
c) In the dialog box, choose "SFODSPRD" and click OK.



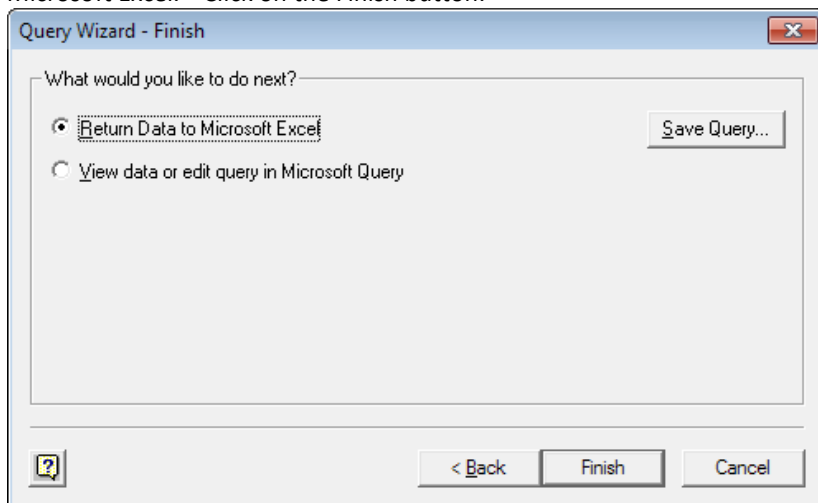
d) Log in to ODS when prompted, then in the Query Wizard dialog box, scroll down to the table named PS_ZGL_DEPT_ATTRIB.



e) Click the arrow in the center top button to place all columns in your query.



f) Click Next, and click Next again on the following two dialog boxes until you get the “Query Wizard – Finish” dialog box. It will default to “Return Data to Microsoft Excel.” Click on the Finish button.



- g) You will now have the entire table of DeptID Attributes in Excel.
 - i) The DeptID is in the column labeled “DEPTID” (column B).
 - ii) The STIP Attribute is in the column “ZGL_FIELD_C10_A.” (column Q).

h) Add a column with the following formula:

=IF(B2=Q2,"N","Y")

and copy this formula down into all rows of the table.

This will place the letter Y in every row where the STIP Attribute is not equal to the DeptID (i.e., where the source and target are not the same because the STIP Attribute has been changed from the default value).

- i) Place a filter on the last column for the letter Y.
- j) Now your table will show only the DeptIDs where the Source does not equal the Target. The effective date of the change is shown in column C, “EFFDT.”
- k) If you want to find where the STIP from your DeptID is going, sort by the Source and look up the Target.
- l) If you want to find all the DeptIDs that are sending STIP to your DeptID, sort by the Target and look up the Sources.

DeptIDs Where the Source and Target for STIP Were Different as of October 2014, Sorted by Source

Source	Target	Effective Date
DEPTID	ZGL_FIELD_C10_A	EFFDT
102005	102006	4/17/2014
110059	110060	4/17/2014
118048	118047	4/17/2014
118049	118047	4/17/2014
130002	130020	4/17/2014
130003	130020	4/17/2014
130005	130020	4/17/2014
130006	130020	4/17/2014
130007	130020	4/17/2014
130008	130020	4/17/2014
130009	130020	4/17/2014
130010	130020	4/17/2014
130012	130020	4/17/2014
130013	130020	4/17/2014
130014	130020	4/17/2014
131021	131028	4/17/2014
131022	131028	4/17/2014
131023	131028	4/17/2014
131024	131028	4/17/2014
131025	131028	4/17/2014
131029	131028	4/17/2014
131032	131028	4/17/2014
131033	131028	4/17/2014
131034	131028	4/17/2014
131037	131028	4/17/2014
131038	131028	4/17/2014
131039	131028	4/17/2014
131040	131028	4/17/2014
131041	131028	4/17/2014
131042	131028	4/17/2014
131043	131028	4/17/2014
131045	131028	4/17/2014
131046	131028	4/17/2014
131047	131028	4/17/2014
132053	132072	4/18/2014
132054	132072	4/17/2014
132055	132072	4/17/2014
132056	132073	4/17/2014
132058	132072	4/17/2014
132060	132072	4/17/2014
132062	132072	4/17/2014
132064	132072	4/17/2014
132066	132072	4/17/2014
132070	132072	4/17/2014
136272	136271	4/17/2014

Source	Target	Effective Date
DEPTID	ZGL_FIELD_C10_A	EFFDT
136273	136271	4/17/2014
136275	136271	4/17/2014
136276	136271	4/17/2014
138322	138321	4/17/2014
138323	138321	4/17/2014
138324	138321	4/17/2014
138325	138321	4/17/2014
138326	138321	4/17/2014
138327	138321	4/17/2014
138330	138329	4/17/2014
138344	138321	4/17/2014
138345	138329	4/17/2014
138403	138404	4/17/2014
138432	138321	4/17/2014
143101	143150	6/17/2014
143104	143150	6/17/2014
143105	143150	6/17/2014
143106	143150	6/17/2014
143107	143150	6/17/2014
143108	143150	6/17/2014
143109	143150	6/17/2014
143110	143150	6/17/2014
143114	143150	6/17/2014
143116	143150	6/17/2014
143117	143150	6/17/2014
143118	143150	6/17/2014
143119	143150	6/17/2014
143120	143150	6/17/2014
143123	143150	6/17/2014
143124	143150	6/17/2014
143125	143150	6/17/2014
143126	143150	6/17/2014
143130	143150	6/17/2014
143132	143150	6/17/2014
143133	143150	6/17/2014
143134	143150	6/17/2014
143136	143150	6/17/2014
143137	143150	6/17/2014
147101	147139	4/17/2014
147102	147139	4/17/2014
147103	147139	4/17/2014
147104	147139	4/17/2014
147105	147139	4/17/2014
147106	147139	4/17/2014
147107	147139	4/17/2014

Source	Target	Effective Date
DEPTID	ZGL_FIELD_C10_A	EFFDT
147108	147139	4/17/2014
147109	147139	4/17/2014
147110	147139	4/17/2014
147111	147139	4/17/2014
147114	147139	4/17/2014
147115	147139	4/17/2014
147116	147139	4/17/2014
147117	147139	4/17/2014
147118	147139	4/17/2014
147119	147139	4/17/2014
147120	147139	4/17/2014
147121	147139	4/17/2014
147122	147139	4/17/2014
147123	147139	4/17/2014
147124	147139	4/17/2014
147125	147139	4/17/2014
147128	147139	4/17/2014
147129	147139	4/17/2014
147130	147139	4/17/2014
147131	147139	4/17/2014
147134	147139	4/17/2014
147135	147139	4/17/2014
147136	147139	4/17/2014
147137	147139	4/17/2014
147138	147139	4/17/2014
147140	147139	4/17/2014
147141	147139	4/17/2014
147143	147139	4/17/2014
303038	303036	4/17/2014
303041	303036	4/17/2014
303042	303036	4/17/2014
303071	303036	4/17/2014
303072	303036	4/17/2014
408043	408041	1/1/1900
408044	408041	1/1/1900
408045	408041	1/1/1900
408046	408041	1/1/1900
408047	408041	1/1/1900
408048	408041	1/1/1900
410067	410065	8/19/2014
410068	410065	8/19/2014
410069	410065	8/19/2014
410070	410065	8/19/2014
410072	410065	8/19/2014

DeptIDs Where the Source and Target for STIP Were Different as of October 2014, Sorted by Target

Target	Source	Effective Date	Target	Source	Effective Date	Target	Source	Effective Date
ZGL_FIELD_C10_A	DEPTID	EFFDT	ZGL_FIELD_C10_A	DEPTID	EFFDT	ZGL_FIELD_C10_A	DEPTID	EFFDT
102006	102005	4/17/2014	136271	136273	4/17/2014	147139	147108	4/17/2014
110060	110059	4/17/2014	136271	136275	4/17/2014	147139	147109	4/17/2014
118047	118048	4/17/2014	136271	136276	4/17/2014	147139	147110	4/17/2014
118047	118049	4/17/2014	138321	138322	4/17/2014	147139	147111	4/17/2014
130020	130002	4/17/2014	138321	138323	4/17/2014	147139	147114	4/17/2014
130020	130003	4/17/2014	138321	138324	4/17/2014	147139	147115	4/17/2014
130020	130005	4/17/2014	138321	138325	4/17/2014	147139	147116	4/17/2014
130020	130006	4/17/2014	138321	138326	4/17/2014	147139	147117	4/17/2014
130020	130007	4/17/2014	138321	138327	4/17/2014	147139	147118	4/17/2014
130020	130008	4/17/2014	138321	138344	4/17/2014	147139	147119	4/17/2014
130020	130009	4/17/2014	138321	138432	4/17/2014	147139	147120	4/17/2014
130020	130010	4/17/2014	138329	138330	4/17/2014	147139	147121	4/17/2014
130020	130012	4/17/2014	138329	138345	4/17/2014	147139	147122	4/17/2014
130020	130013	4/17/2014	138404	138403	4/17/2014	147139	147123	4/17/2014
130020	130014	4/17/2014	143150	143101	6/17/2014	147139	147124	4/17/2014
131028	131021	4/17/2014	143150	143104	6/17/2014	147139	147125	4/17/2014
131028	131022	4/17/2014	143150	143105	6/17/2014	147139	147128	4/17/2014
131028	131023	4/17/2014	143150	143106	6/17/2014	147139	147129	4/17/2014
131028	131024	4/17/2014	143150	143107	6/17/2014	147139	147130	4/17/2014
131028	131025	4/17/2014	143150	143108	6/17/2014	147139	147131	4/17/2014
131028	131029	4/17/2014	143150	143109	6/17/2014	147139	147134	4/17/2014
131028	131032	4/17/2014	143150	143110	6/17/2014	147139	147135	4/17/2014
131028	131033	4/17/2014	143150	143114	6/17/2014	147139	147136	4/17/2014
131028	131034	4/17/2014	143150	143116	6/17/2014	147139	147137	4/17/2014
131028	131037	4/17/2014	143150	143117	6/17/2014	147139	147138	4/17/2014
131028	131038	4/17/2014	143150	143118	6/17/2014	147139	147140	4/17/2014
131028	131039	4/17/2014	143150	143119	6/17/2014	147139	147141	4/17/2014
131028	131040	4/17/2014	143150	143120	6/17/2014	147139	147143	4/17/2014
131028	131041	4/17/2014	143150	143123	6/17/2014	303036	303038	4/17/2014
131028	131042	4/17/2014	143150	143124	6/17/2014	303036	303041	4/17/2014
131028	131043	4/17/2014	143150	143125	6/17/2014	303036	303042	4/17/2014
131028	131045	4/17/2014	143150	143126	6/17/2014	303036	303071	4/17/2014
131028	131046	4/17/2014	143150	143130	6/17/2014	303036	303072	4/17/2014
131028	131047	4/17/2014	143150	143132	6/17/2014	408041	408043	1/1/1900
132072	132053	4/18/2014	143150	143133	6/17/2014	408041	408044	1/1/1900
132072	132054	4/17/2014	143150	143134	6/17/2014	408041	408045	1/1/1900
132072	132055	4/17/2014	143150	143136	6/17/2014	408041	408046	1/1/1900
132072	132058	4/17/2014	143150	143137	6/17/2014	408041	408047	1/1/1900
132072	132060	4/17/2014	147139	147101	4/17/2014	408041	408048	1/1/1900
132072	132062	4/17/2014	147139	147102	4/17/2014	410065	410067	8/19/2014
132072	132064	4/17/2014	147139	147103	4/17/2014	410065	410068	8/19/2014
132072	132066	4/17/2014	147139	147104	4/17/2014	410065	410069	8/19/2014
132072	132070	4/17/2014	147139	147105	4/17/2014	410065	410070	8/19/2014
132073	132056	4/17/2014	147139	147106	4/17/2014	410065	410072	8/19/2014
136271	136272	4/17/2014	147139	147107	4/17/2014			