

UPlan Weekly Digest

Friday, December 1, 2017

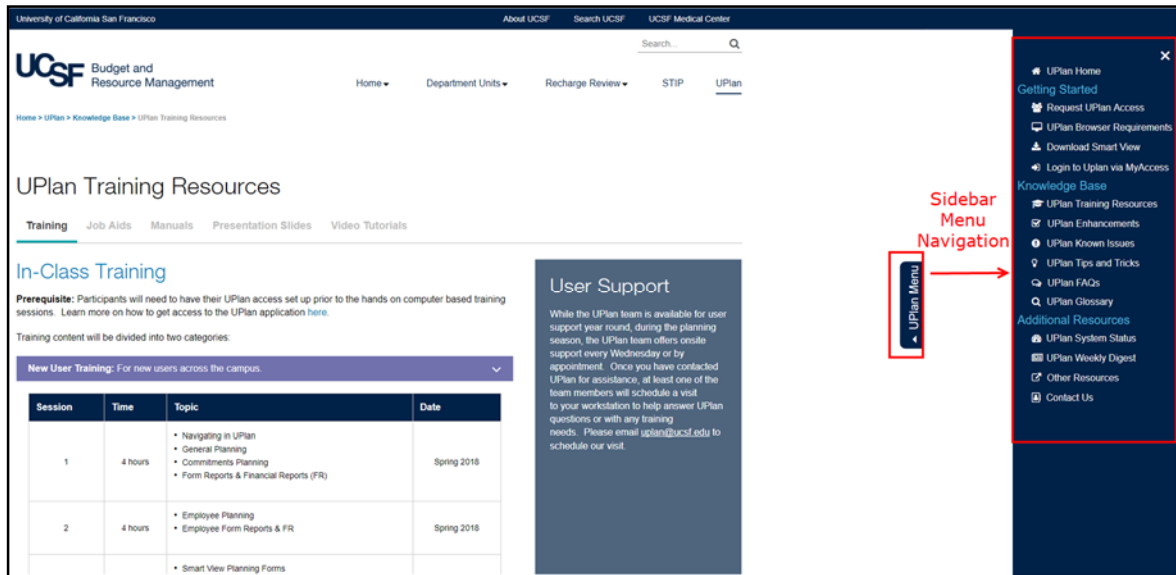
Announcements:

- **Redesigned UPlan Resources Website:** The new UPlan Resources website has been redesigned to simplify content and improve accessibility to training materials and communication updates.

Some highlights of the redesign include:

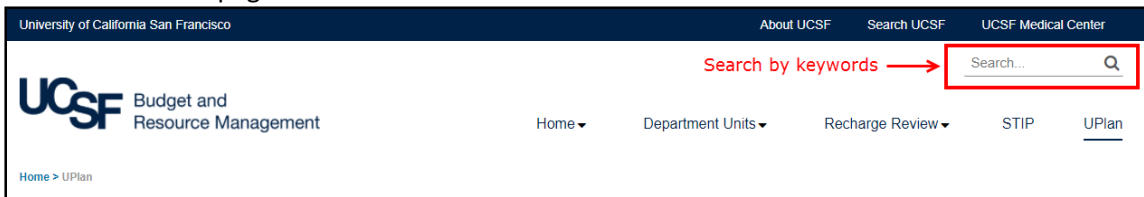
1. Streamlined menus with clearer navigation that direct end-users to the most relevant information and resources quickly and efficiently.

The screenshot displays the UPlan website interface. At the top, there is a navigation bar with links for 'About UCSF', 'Search UCSF', and 'UCSF Medical Center'. Below this is the UCSF logo and 'Budget and Resource Management' text. A secondary navigation bar includes 'Home', 'Department Units', 'Recharge Review', 'STIP', and 'UPlan'. A search bar is located on the right. The main heading is 'UCSF Financial Planning and Analysis Tool', followed by a descriptive paragraph. Below this is a 'UPlan Calendar' section with a 'SEE MORE' button and four calendar entries for December 14, 17, and 21, and January 14. A red box highlights the 'Main Page Navigation' area, which includes three columns: 'Getting Started' (with links for Request UPlan Access, UPlan Browser Requirements, Download Smart View, and Login to Uplan via MyAccess), 'Knowledge Base' (with links for UPlan Training Resources, UPlan Enhancements, UPlan Known Issues, UPlan Tips and Tricks, UPlan FAQs, and UPlan Glossary), and 'Additional Resources' (with links for UPlan System Status, UPlan Weekly Digest, Other Resources, and Contact Us). A blue box highlights the 'Latest Updates' section, which features 'UPlan Tweets' from @UCSF_UPlan. At the bottom, a green box highlights the 'Footer Navigation on all pages', which mirrors the 'Main Page Navigation' content. The footer also includes the UCSF logo, 'University of California San Francisco', a 'Contact the Webmaster' button, and a copyright notice: '© 2017 The Regents of the University of California'.

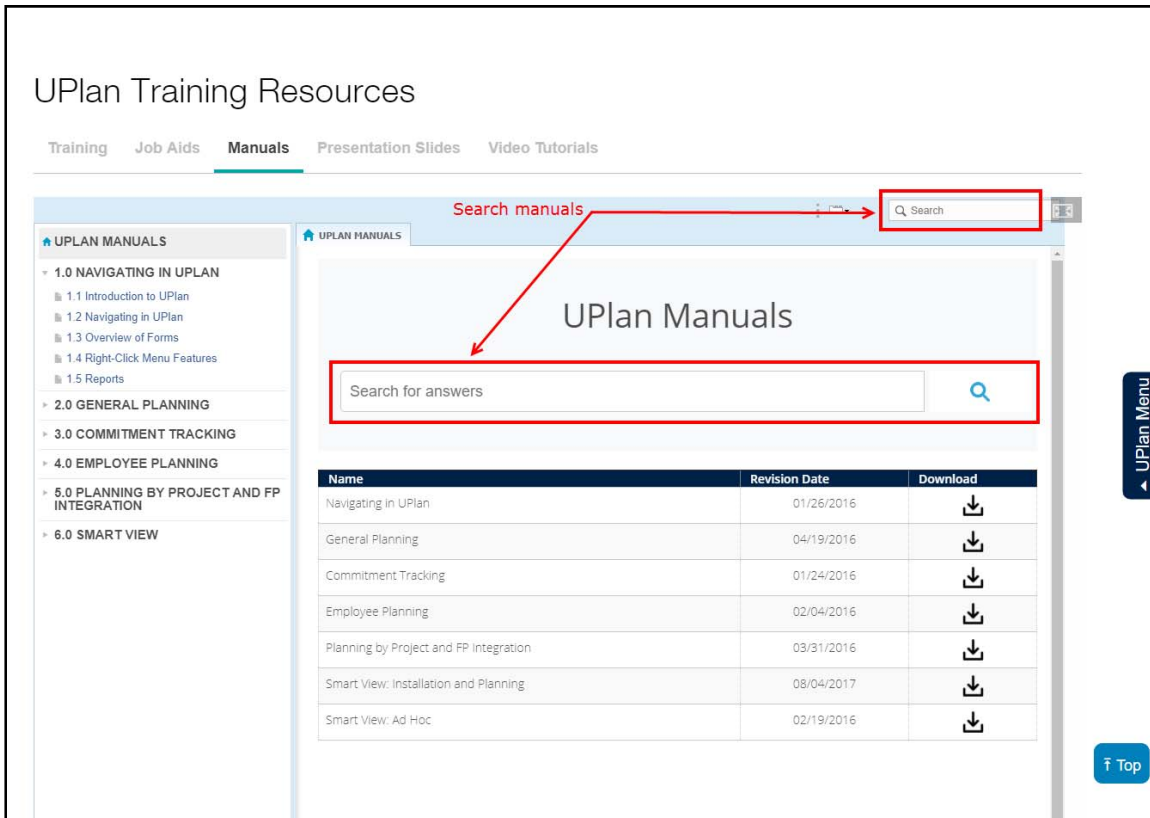


2. Better search functionality, including the ability to search online user manuals and job aids.

- o Search UPlan webpages



- o Search UPlan manuals



- Filter and search within Job Aids.

University of California San Francisco About UCSF Search UCSF UCSF Medical Center

UCSF Budget and Resource Management Home Department Units Recharge Review STIP UPlan

Home > UPlan > Knowledge Base > UPlan Training Resources > General Planning Global Assumptions

General Planning Global Assumptions

Global Assumption Categories by Fund and Project Use

The following table shows Fund and Project Use values to which each row of the global assumption table applies.

Global Assumption Row Category	Funds	Project Uses
<input type="text" value="Filter by Fund"/>	<input type="text" value="Filter by Fund"/>	<input type="text" value="Filter by Project Use"/>
Endowment Earnings	1800 State specific fund	Costed Central Activities Non-recharge, Non-CCA Recharges Sponsored Projects
ICR Appropriations	1810 State special grants fund	
Private Gifts		
S&S – Costed Central		
S&S – Other		
S&S – Recharges	1884 State lottery fund	All
Sponsored Projects		
State Appropriations	1900 State educational appropr	All
State Appropriations	1924 Student academic prep progs	All
ICR Appropriations	1933 UC general fund	All
Sponsored Projects	1999 Other Sources – UC Programs	Sponsored Projects
Tuition and Fees	3000 Tuition	All
Tuition and Fees	3010 Nonresident Supplemental Tuition	All

3. More resources and new content added:

- **Request UPlan Access** page shows new users how to get access to UPlan.
- **UPlan Browser Requirements** page contains presentation slides and guides that will walk users through the setup of their browser settings.
- **Download Smart View** page provides step-by-step instructions on how to download and install Smart View.
- **System Status** page indicates UPlan availability, timing of data movement, and scheduled maintenance.

Your feedback is very important to us as we strive to continue to develop a website that is valuable to you and your ideas are welcome! Please contact the UPlan team at uplan@ucsf.edu if you have any questions, comments, or concerns.

Bug Fixes & Enhancements:

- Reference the [UPlan Enhancements](#) page for a complete list of enhancements relevant to the last fiscal year.

Known Issues:

- Reference the [UPlan Known Issues](#) page on our website for a complete list of unresolved issues. As known issues are resolved, they will be announced under “Bug Fixes & Enhancements.”