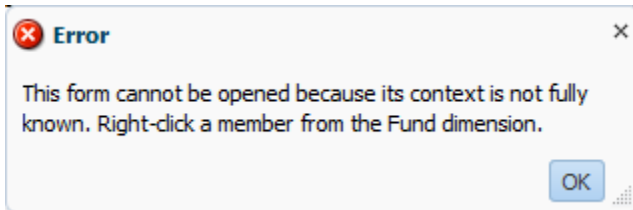


# UPlan Weekly Digest

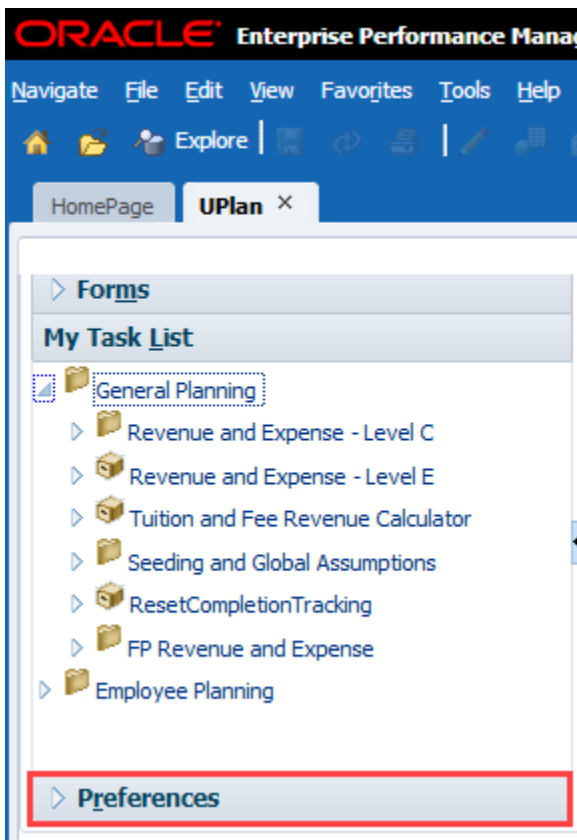
Friday, September 21, 2018

## Tips & Tricks:

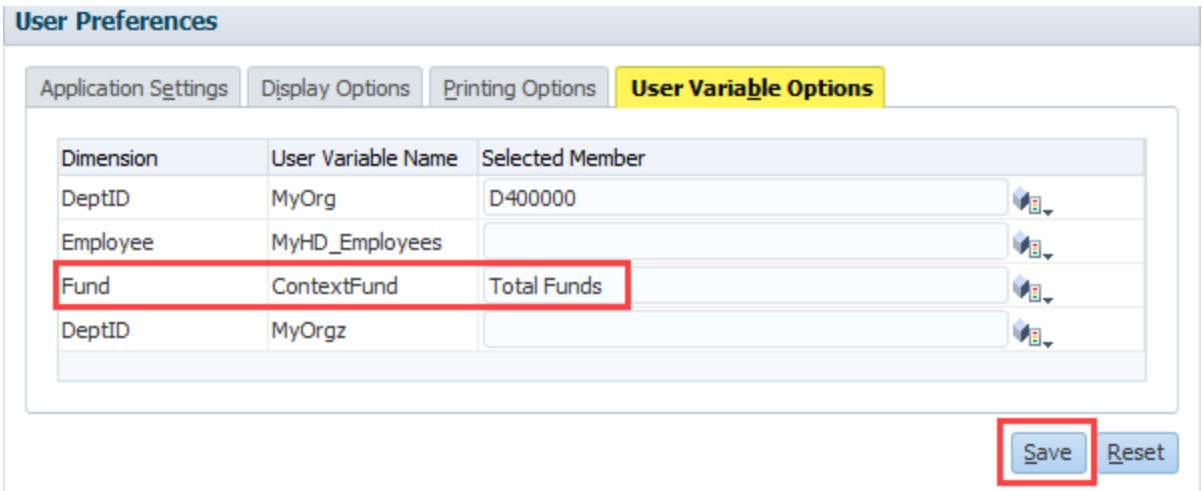
- **To Clear the Revenue and Expense Form Error:** Due to an Oracle bug, some planners were encountering an error message when opening the Revenue and Expense – Level C/E form. To remedy this issue, planners should modify a new field in User Preferences called "ContextFund" by following the steps below:



- **In UPlan Web**
  1. Open the UPlan application
  2. From the UPlan page, select 'Preferences' in the View Pane

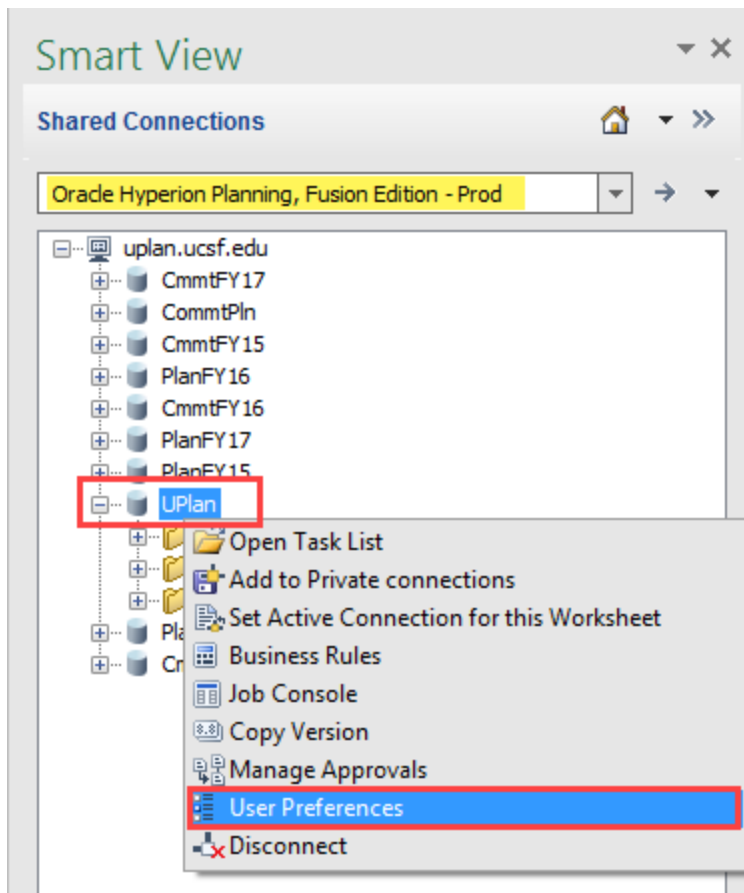


3. Click the 'User Variable Options' tab
4. Type in a Fund ID in the ContextFund textbox (i.e. 1800, 5000, Total Funds, etc.)
5. Click 'Save' or press 'Ctrl + S'

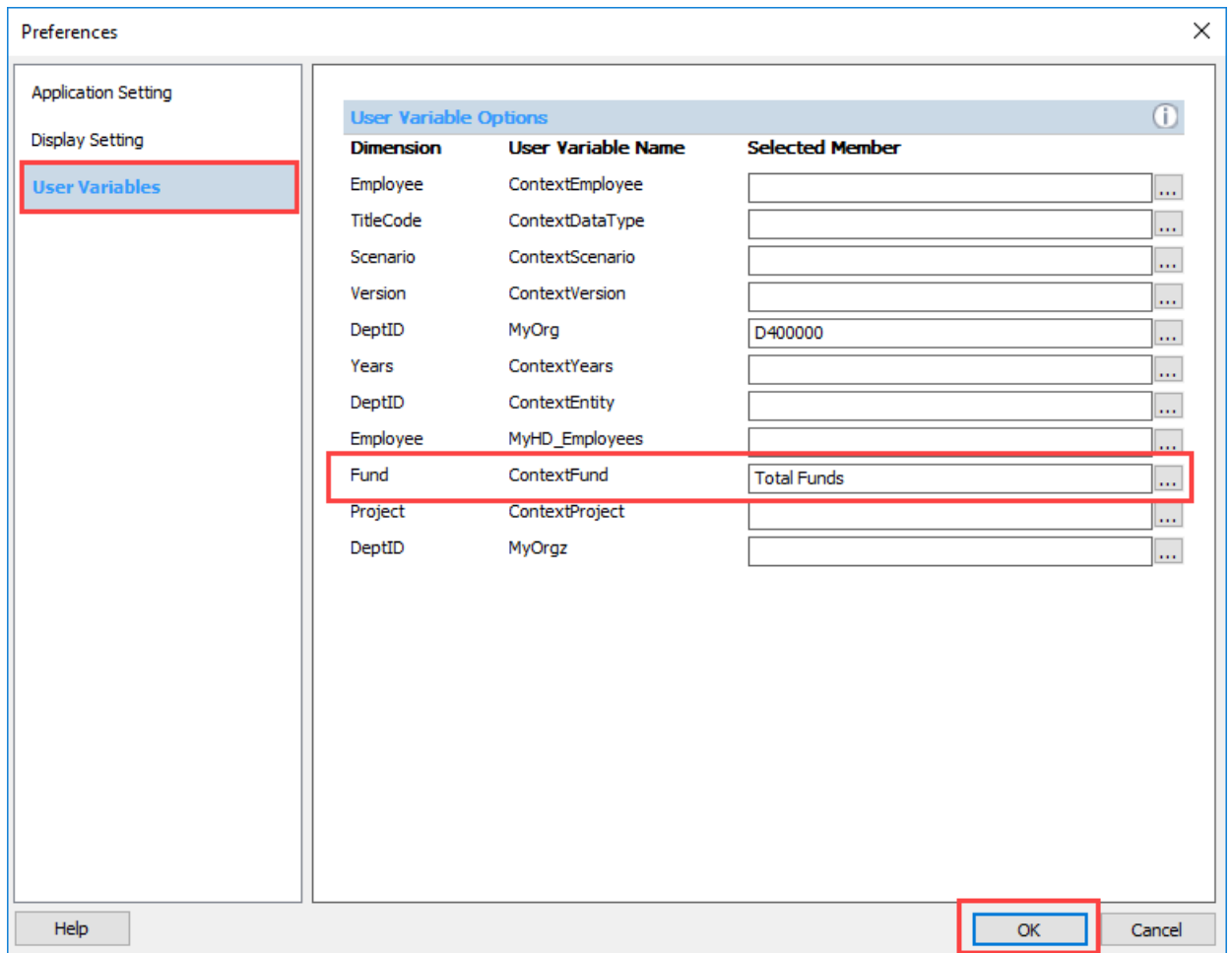


○ **In Smart View**

1. Connect to 'Oracle Hyperion Planning, Fusion Edition – Prod'
2. Right-click on the 'UPlan' application and select 'User Preferences'



3. From the Preferences window, select 'User Variables' in the View Pane
4. Type in a Fund ID in the ContextFund textbox (i.e. 1800, 5000, Total Funds, etc.)
5. Click Ok



### Bug Fixes & Enhancements:

- Reference the [UPlan Enhancements](#) page for a complete list of enhancements relevant to the last fiscal year.

### Known Issues:

- **Employee's Home Department Incorrectly Mapped to the Multi-Empl Distr Pct Form:** The distribution percentages in the Multi-Empl Distr Pct form for Jul and Aug actuals are incorrectly being mapped to employee's home departments instead of their funding departments. This issue has no impact to the dollars in Employee or General.
- Reference the [UPlan Known Issues](#) page on our website for a complete list of unresolved issues. As known issues are resolved, they will be announced under "Bug Fixes & Enhancements".