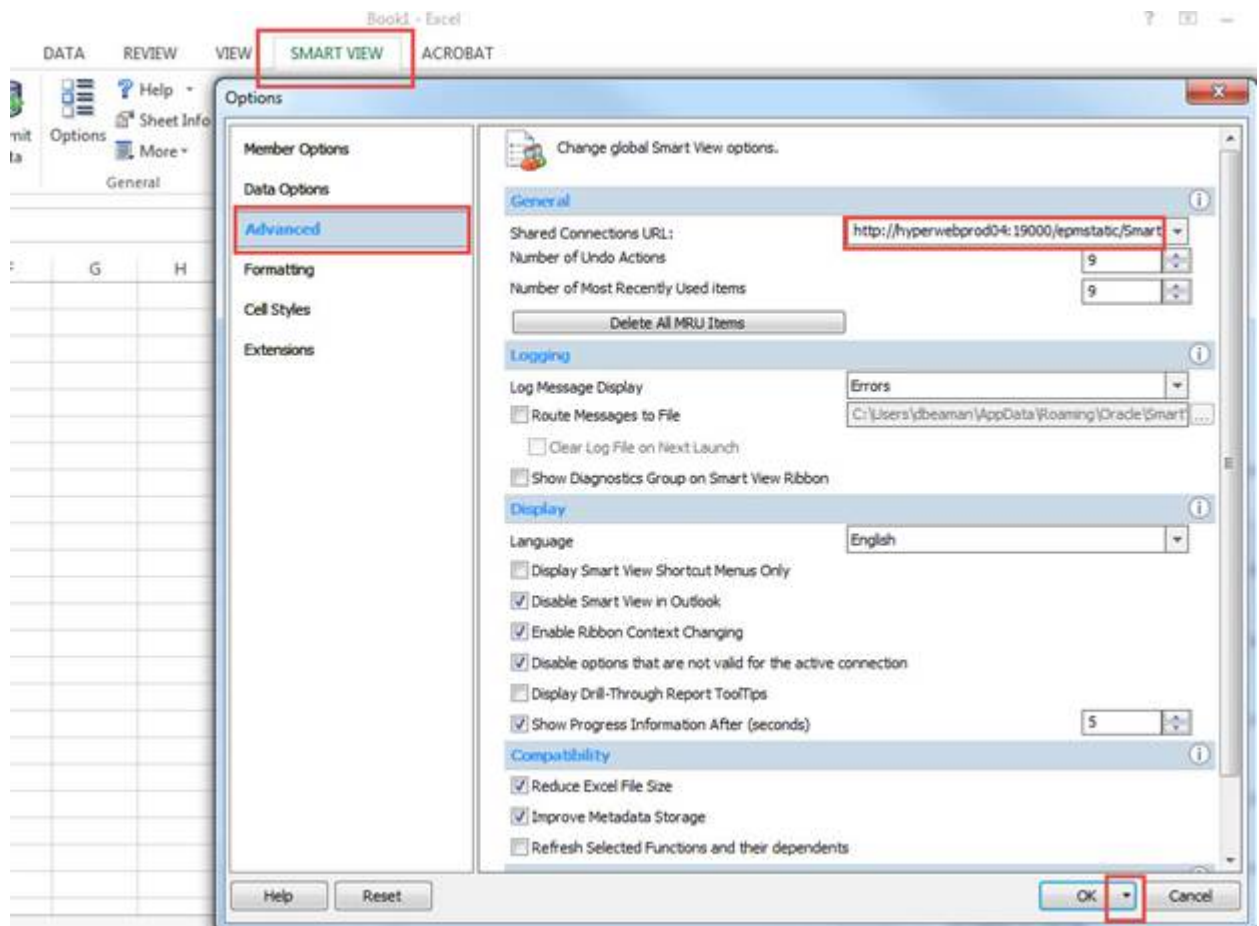


## UPlan Weekly Digest

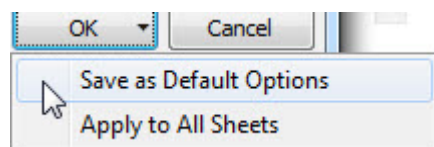
Friday, March 11, 2016

### Announcements:

- **UPlan Scheduled Maintenance: 5:00pm, Friday, 3/11/16** - ITS will be applying an important patch to the UPlan server today at 5:00pm. UPlan will be unavailable for approximately 4 hours. A notice will be sent when the system is brought back online.
- **New Smart View URL:** All Users should update their Smart View URL. Updating the URL solves the Smart View FR Report issue as outlined in the Bug Fixes/Enhancements section below. To update the URL:  
Open Excel > click on Smart View ribbon > click on Options > Advanced Tab > insert this URL: [http://hyperwebprod04:19000/epmstatic/SmartView\\_Connections.xml](http://hyperwebprod04:19000/epmstatic/SmartView_Connections.xml)



Click on the triangle on the OK button > Save as Default Options.



- **Updated UPlan Job Aids:** Several of the UPlan Job Aids have been updated for Spring 2016 at <https://brm.ucsf.edu/uplan-training-and-job-aids>. Training manuals and slides are also available for reference.
- **PeopleSoft Financial System Upgrade:** PeopleSoft is scheduled to be down starting March 24<sup>th</sup> and back up on March 28<sup>th</sup>. Certain UPlan nightly load processes related to chartfields will be affected during this time though we anticipate minimal impact. More information pertaining to the PeopleSoft upgrade can be found on the Controller's Office website: [http://controller.ucsf.edu/fin\\_systems/PS92upgrade.asp](http://controller.ucsf.edu/fin_systems/PS92upgrade.asp)

### Known Issues:

- **Employee Landing Form:** The 2016-17/Plan/Base&Neg Dist (%) column on the "Empl Landing Page" form may be missing the distribution percentages that were entered for employees. There is no impact to the integration of employee data to General Planning or any other employee forms or reports. This issue is under investigation.

	2015-18		2016-17		2016-17	
	Forecast	June Variance (YTD Base/Neg Dist%)	Plan	Plan	2016-17 Plan	June Variance (YTD Base/Neg Dist%)
	Base/Neg Dist (%)		New Base/Neg Salary	PTE	Base/Neg Dist (%)	
	100%	100%	126,000		100%	100%
	100%	0%	90,000			
	100%	0%	176,000			
	100%	100%	110,000			
	100%	0%	327,000		100%	-100%
	100%	100%	82,400		0%	0%
	100%	-100%	0			
		100%	100,000			
	100%	100%	107,000			
	100%	-100%	103,000		0%	0%
	100%	0%	60,000		100%	-100%
	0%	100%	176,000			
	100%	-100%	0		0%	0%
		100%	108,300			
	100%	0%	110,000		100%	-100%
		100%	124,000			

- **Search Individual Empl form in Smart View only:** Due to an Oracle bug, when planners use the Search Individual Empl form in Smart View to submit data, they are prompted to select and enter the Employee ID in order to submit the data successfully. A work-around is to **use the Search Individual Empl form in the web**, which does not require planners to select the employee. This issue will not be resolved until Oracle releases the fix in the next patch.

Business Rules

Plan Type

Empl

Business Rule	Plan Type	Type
Employee Composite	Empl	Rule Set

Runtime Prompts

Please select the Employee

Save Cancel

- Search Individual TBH form in Smart View only:** Similar to the Search Individual Employee form in Smart View issue (please see above), when planners use the Search Individual TBH form in Smart View to submit data, they are prompted to select and enter the TBH in order to submit the data successfully – this is a known Oracle bug. A work-around is to **use the Search Individual TBH form in the web**, which does not require planners to select the TBH. This issue will not be resolved until Oracle releases the fix in the next patch.
- Navigation to the Employee Composite form or to the Compensation by DFP report:** When planners navigate to the individual employee composite form from another form, they may not be brought directly to the chosen employee. Likewise, when planners navigate to the Compensation by DFP report from the Revenue and Expense form, they may not be directly to the chosen DFP. This issue is under investigation.