

# UPlan Weekly Digest

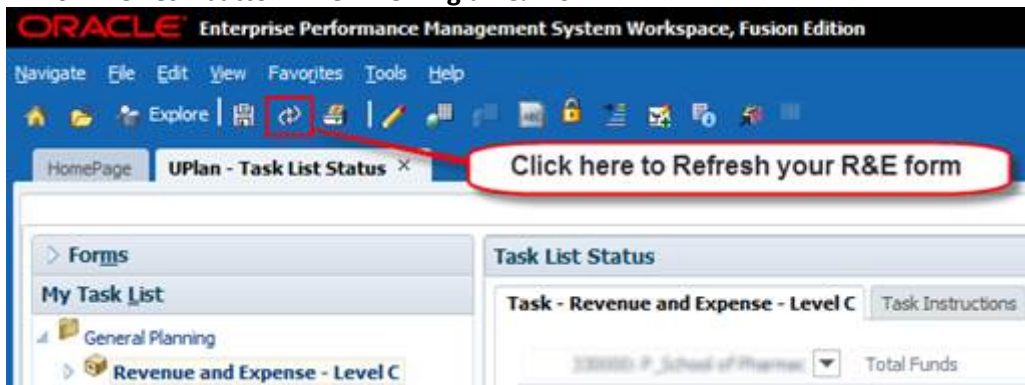
Friday, May 27, 2016

## Announcements:

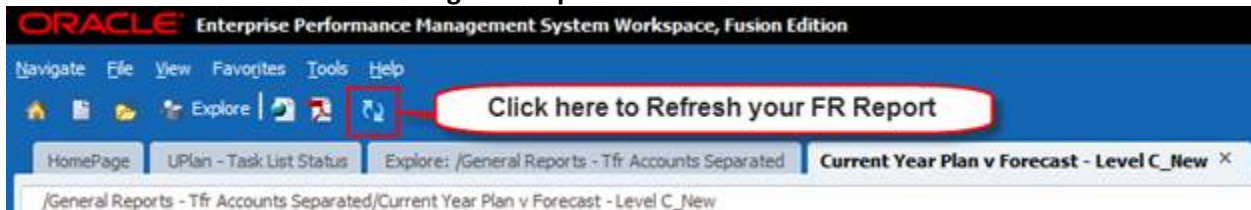
- **Drill Through Unavailable through Smart View when FireFox is default browser:** There are two workarounds to use Drill Through from Smart View:
  - Make IE your default browser so that it works from Smart View, or
  - Instead of Smart View use UPlan web to Drill ThroughSee the [Planning by Project training manual](#) for Drill Through instructions.

## Tips & Tricks:

- **Are your Staff Salaries & Benefits missing in your Revenue & Expense form and FR Reports?** If so, you may want to refresh the report or your screen if you are pulling at an aggregate-level DFP. Why is this happening? Employee integrations occur at the top of the hour for 2 minutes, and at the half hour for 2 minutes. During this window, staff salaries and benefits data is cleared from the R&E form, loaded in to the R&E form, then aggregated up to higher DFP levels. So if the form was rendered during the two minute window, salaries and benefits may appear missing in your R&E and FR Reports.
  - **Refresh button when viewing a R&E form:**



- **Refresh button when viewing a FR Report:**



## Bug Fixes & Enhancements:

- Reference the [UPlan Enhancements](#) page for a complete list of enhancements relevant to this fiscal year.

## Known Issues:

- Reference the [UPlan Known Issues](#) page on our website for a complete list of unresolved issues. As known issues are resolved, they will be announced under "Bug Fixes & Enhancements".